



MATTAMY VARGA-PHASE 1A & 1B

PROJECT



GROUNDING IN STRENGTH

Allow our broad range of cost-effective customizable products to bring value to your next project.

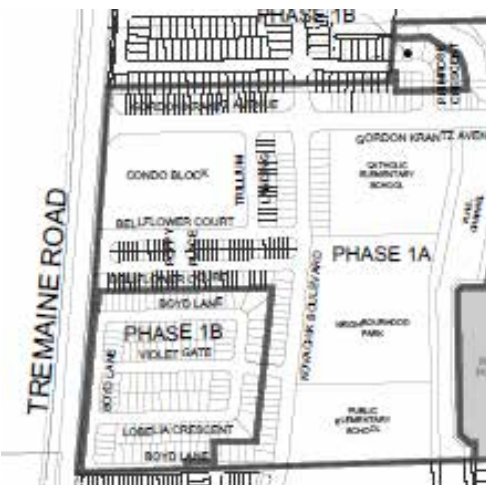
At Forterra we take pride in our ability to bring our customers the affordable, quality construction materials they need. Providing pre-fabricated designs that save time and money while increasing safety is one of many ways we do just that.

Project Description

The Mattamy Varga Phase 1A & 1B project is a part of a large subdivision development located along Tremaine Road in Milton. This project had over 350 metres of precast box culvert units and over 2 million dollars worth of precast concrete product. This development will provide over 125 single home dwellings within the Town of Milton.

Because precast box sections are structurally guaranteed the moment they arrive on the jobsite, there was no need to wait around for the concrete to achieve a particular strength. Comparatively, a cast-in-place box would need extra crews, more equipment, and a significantly larger timeline to complete.

Customizable layouts, proven design, and time-saving efficiency are just a few ways that precast boxes continue to be the product of choice for owners and engineers alike.



Project Type
Box Culvert

Contractor
Pilen Construction

Owner
Mattamy (Milton West) Ltd

Location
Milton Ontario

Engineer
DSEL (David Schaeffer Engineering Ltd)

